

SLAffinity[®]

The best surface treatment ever

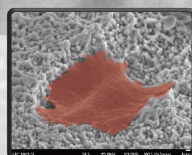
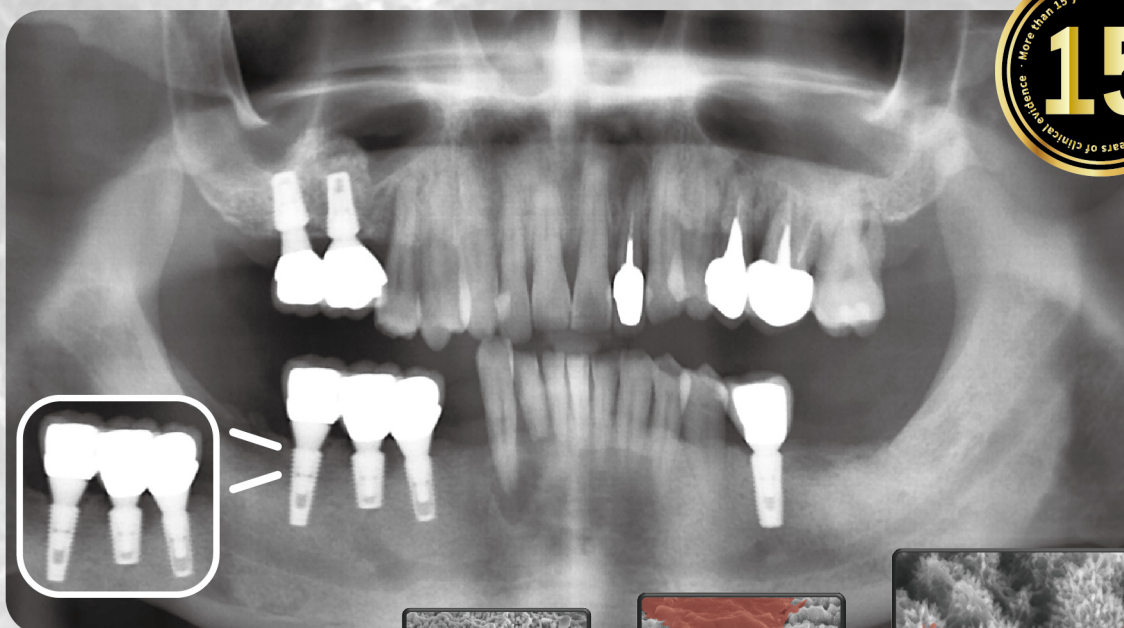
Exclusively Patented Surface Treatment

By using special SLA surface treatment (Sand-blasting , Large-gritting) , the implant surface can have more roughness which increases the contact area between bone and the implant , creating 1~1.5µm porosity .

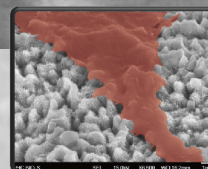
After the SLA ,the special electric-chemical treatment is conducted to add the thickness of oxide layer on the surface, forming improved porosity that helps osteoblast cells to attach , bringing greater hydrophilicity .

The SLAffinity[®] implant can quickly absorb the protein and growth factor, bringing outstanding osseointegration performance within shorter healing time.

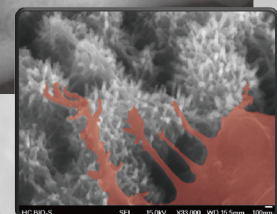
Because of SLAffinity[®] surface treatment , the osteoblast cells will be effectively guided to fix and grow on the implant surface.



X3,000



X6,500



X33,000

Nanometer scale surface roughness