

# USB Intraoral camera

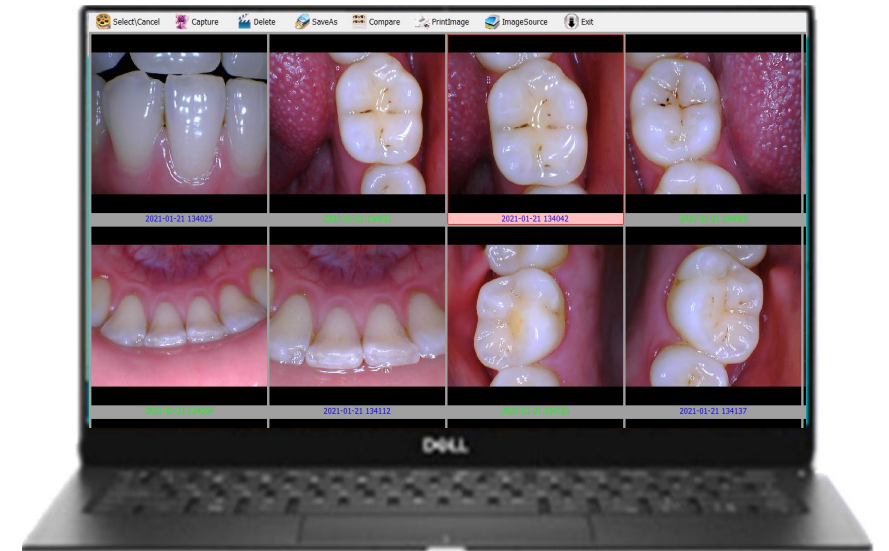
CF-68g

8.0 Megapixel

CMOS High resolution



Directly connect to computer use



# Features:

- 1** Camera with CMOS high resolution lens 8 mega pixels ,High sensitivity, High performance
- 2** Connect with laptop directly.no need power supply
- 3** Convenient to takeaway easy going ,easy operation

## Button introduction



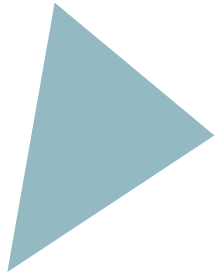
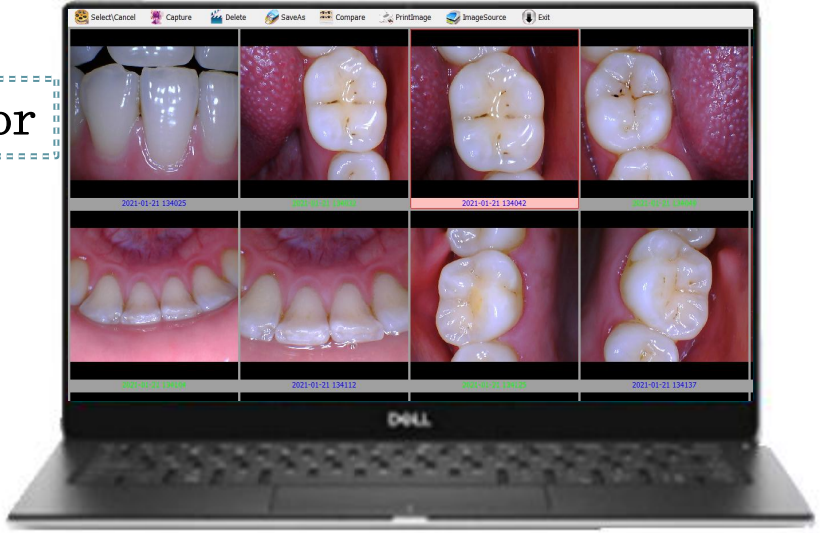


A

B

Connect with  
intraoral camera

USB connector



Spec:

Item	intraoral Camera
Mold number	CF-689
LED light	6pcs LED
Focus	Auto focus
Pixels	8 Megapixels CMOS



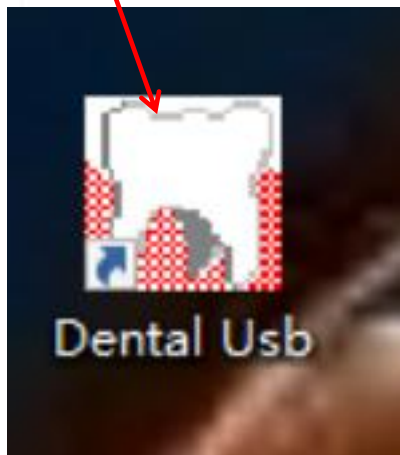
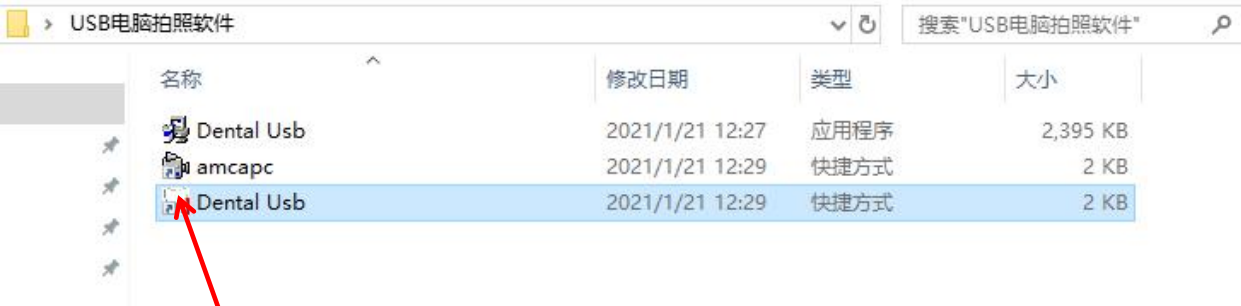
**CMOS High resolution from Japan**

## Accessories:

Intraoral camera	1 piece
USB cable	1 piece
Camera sheath	50 pcs
Manual	1 piece



# Program



①

Double click software



②

Click this page to enter to patient's file page

A screenshot of a patient data entry form with a pink background. It contains input fields for 'No.', 'Name', 'Identity card', and 'Tel.'. Below the fields are buttons for 'Add', 'Search', 'Exit', 'Edit', 'Delete', and 'Enter'. A table is at the bottom with columns for 'No.', 'Name', 'Identity card', and 'Tel.'. A red circle with the number '3' is placed over the 'No.' input field, with the text 'Patient's file' next to it.

No.	Name	Identity card	Tel

③

Patient's file

# Create a patient medical file

No.

Name

Identity card

Tel.

No.	Name	Identity card	Tel
▶	OO		123456123123

2. Enter the homepage and click the **(Search)** list, the established patient's file will appear. Select the corresponding file and click to **(Enter)** to photo page

1. After editing the patient's information, click **Add** to save the patient profile

No.

Name

Identity card

Tel.

No.	Name	Identity card	Tel
▶	OO		123456123123
	OO		123456123123
1	Dental Usb		



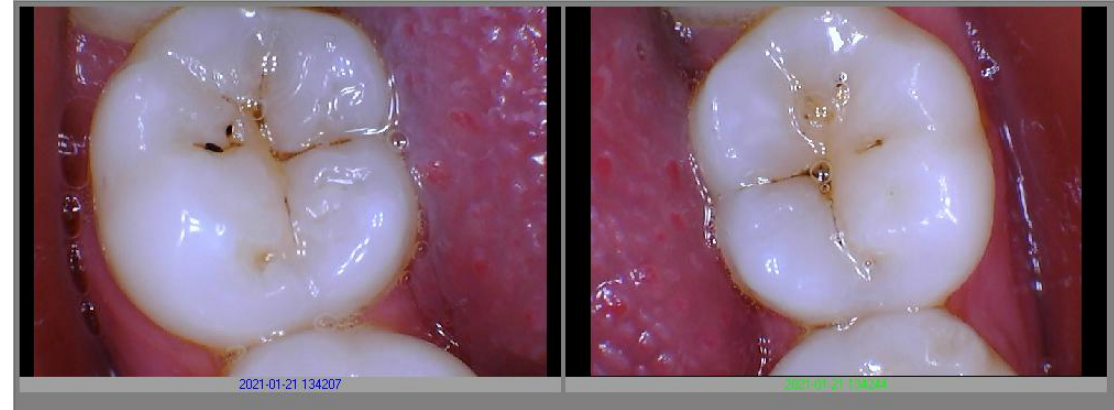
3. Click **(Capture)** to start work



# Compare

Click the **select** to select the picture which you want to compare  
Then Click the **compare** to compare

2 pictures compare

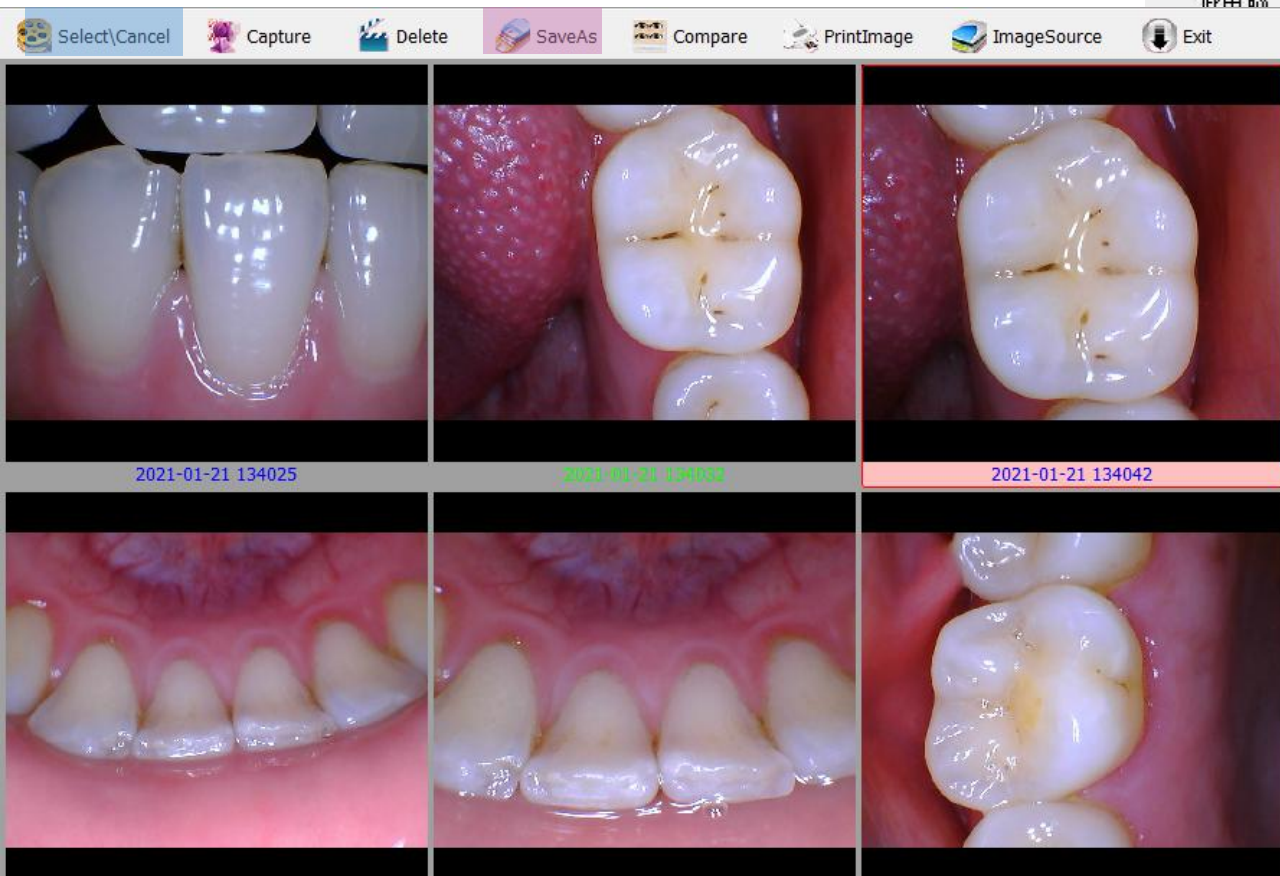
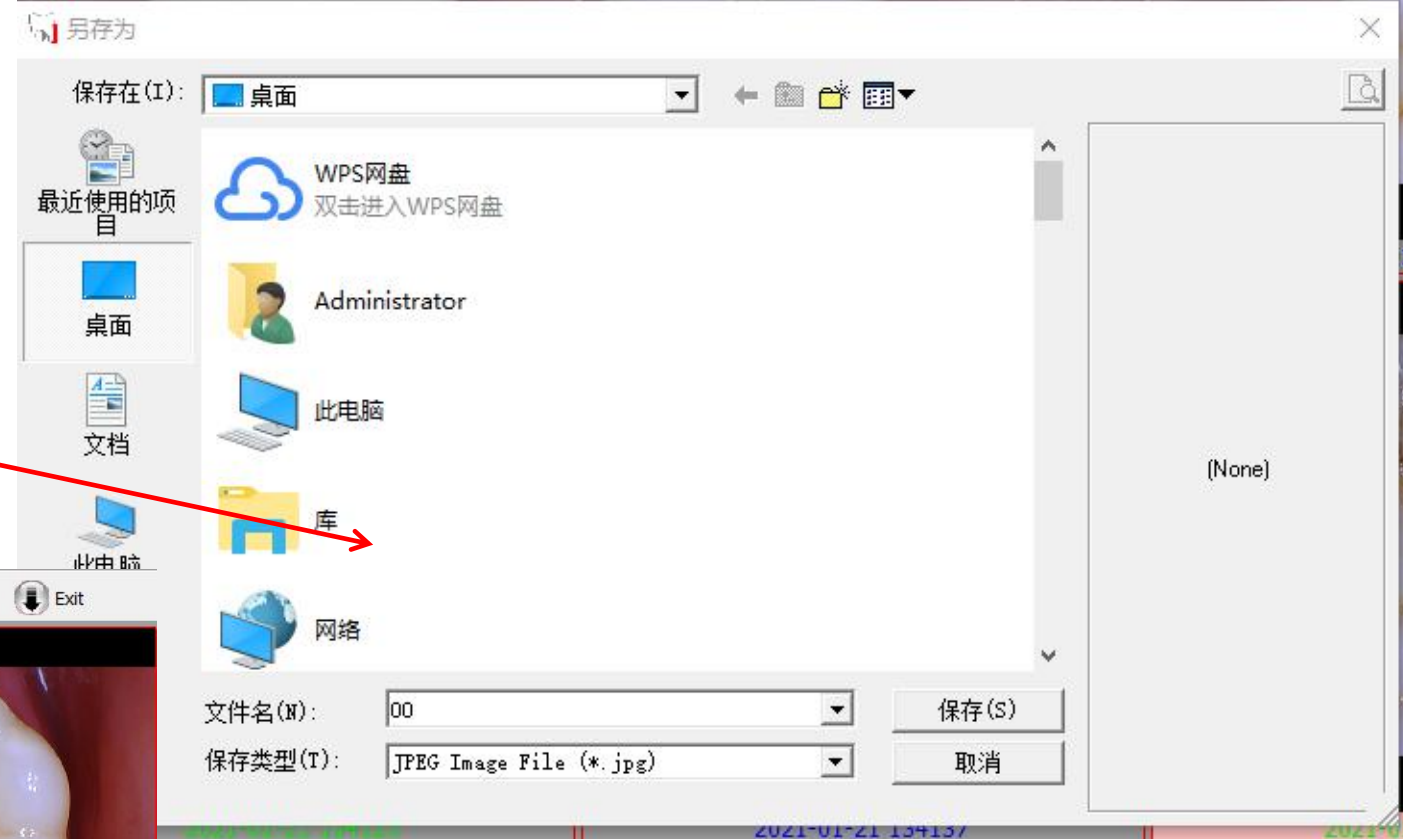


4 pictures compare



# Save as

1. click **select** choose the picture which you want to save to desktop and then click **SaveAS**



2. Picture will save to desktop if you need also can print it out)



# 打印:

1. click the **PrintImage** to select the picture which you want to print

2. Click the printer **button #1** to choose your print machine after confirm the print machine click **printer #2** to print

