

AVer



**CARING
WITHOUT LIMITS**



AVer MD330UI

Medical Grade PTZ Camera 





AVer MD330UI is specially designed and medically certified for Telemedicine with the IEC 60601 Medical Certification. The 30X optical zoom lens with 4K output resolution delivers superb image quality. AI Noise Reduction offers a face-to-face communication experience for patients and doctors. A first in the industry, the removable camera head makes 360-degree angle close-up shooting and snapshots possible. The MD330UI is available for infrared night view, delivering care 24/7.



30X Optical Zoom



4K Output Resolution



Speedy Focus



Wide Angle PTZ



Handheld Camera Head



Short Working Distance



One-Click Pan-Tilt



One-Button Snapshot



IR for Night View



Medical Certifications

Revolutionary Removable Head Design

The removable camera head design is a true revolution in telemedicine – not only can the doctor make use of the motorized remote controlled PTZ functionality, the near-site medical assistant can also simply remove the camera from the base and easily give the doctor a clear view of any difficulties to capture area of interest.



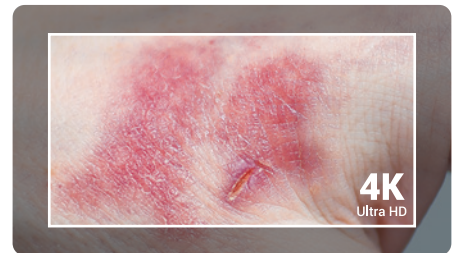
Unparalleled 30X Optical Zoom Capability

The 30X optical zoom lens picks up even the smallest of details for the doctor to precisely diagnose, thanks to a superior autofocus, zoom speed and speedy camera movements.



Outstanding 4K Resolution

The MD330UI delivers ultra-clear 4K resolution imagery of the patient to the doctor and works together with the excellent 30X optical zoom to allow doctors to make accurate remote diagnoses.



AI Acoustics

With an integrated speakerphone and microphone, the MD330UI is equipped with an all-in-one audio system. AVer's in-house AI Noise Deduction technology makes communication smooth and telemedicine sessions stress free.



Medical Grade Certification

The IEC 60601 medical certification not only ensures stability and safety of the MD330UI, but also guarantees the compatibility of other medical grade devices with the MD330UI.



Product Specifications

Camera		Speaker	
Image Sensor	1/2.8" 4K Exmor CMOS	Embedded Speaker	Yes
Effective Picture Elements	8 Megapixels	SPL	77 dB SPL (1W / 1m)
Output Resolutions	4K/30 (IP/UVC), 1080p/60, 1080p/59.94, 1080p/50, 1080p/30, 1080p/29.97, 1080p/25, 720p/60, 720p/59.94, 720p/50, 720p/30	Maximum SPL	90 dB SPL at 0.5 m
Minimum Illumination	0.7 lux (IRE50, F1.6, 30fps)	Microphone	
S/N Ratio	≥ 50 dB	Built-in Microphone	2 (Omnidirectional)
Gain	Auto, Manual	AI Noise Reduction	Yes
Shutter Speed	1/1 to 1/10,000 sec	Pickup Range	5 m
Exposure Control	Auto, Manual, Priority AE (Shutter, IRIS), BLC, WDR	Sensitivity	-33 dBFS
White Balance	Auto, Manual	Frequency Response	20 Hz to 20 KHz
Optical Zoom	30X	Maximum SPL	133 dB SPL at 0.5 m
Viewing Angles	DFOV : 75.5° (Wide) to 3.1° (Tele) HFOV : 68.0° (Wide) to 2.7° (Tele) VFOV : 41.7° (Wide) to 1.5° (Tele)	Loop Recording	
Focal Length	f = 4.3 mm (Wide) to 129 mm (Tele)	Resolution	Up to 4K
Aperture (Iris)	F = 1.6 (Wide) to 4.7 (Tele)	Length of Video	5 minutes
Minimum Working Distance	0.01 m (Wide), 1.2 m (Tele)	Recording Modes	Loop & continuous
Pan / Tilt Angles	Pan : ±170° / Tilt: +90° / -35°	Loop Mechanism	Wipe the oldest clip
Pan / Tilt Speed (Manual)	Pan : 0.1° to 100° / sec, Tilt: 0.1° to 100° / sec	IP Streaming	
Presets Speed	Pan : 200° / sec, Tilt: 200° / sec	Resolution	4K 30fps
Presets Positions	10 (IR), 256 (RS-232 / IP)	Network Video Compress Formats	H.264, H.265
Camera Control - Protocols	VISCA (RS-232 / IP), PELCO-D & PELCO-P (RS-232), CGI (IP)	Maximum Frame Rate	4K 30fps
Image Processing	Noise Reduction (2D / 3D), Flip, Mirror, WDR, BLC	Network Interface	10 / 100 / 1000 Base-T
Power Frequencies	50 Hz, 60 Hz	Multi-Stream Capability	2 (RTSP / Web Page), 4K 30fps (max.)
Interface		Network Protocols	IPv4, TCP, UDP, ARP, ICMP, IGMP, HTTP, DHCP, RTP / RTCP, RTSP, RTMP, VISCA over IP
Video Outputs	HDMI, IP, USB	USB	
Audio Outputs	HDMI, IP, USB	Connector	USB 3.0
General		Video Format	MJPEG · YUY2
Power Requirement	AC 100 - 240V to DC 12V / 3.34A	Audio Format	PCM
Power Consumption	36W	USB Video Class (UVC)	UVC 1.1
Dimensions (W x H x D)	168 x 205 x 126 mm	USB Audio Class (UAC)	UAC 1.0
Net Weight	1.95 kg	Software Tools	
Application	Indoor	IP Search and Configuration Tool	Support Windows® 7 or later
Tally Lamp	N / A	Warranty	
Security	Kensington Slot	Camera	3 Years
Remote Control	Infrared	Accessories	1 Year
Operating Conditions	Temperature : 0 °C to +35 °C; Humidity : 20% to 80%	Package Contents	
Storage Conditions	Temperature : -20 °C to +60 °C; Humidity : 20% to 95%	Camera, Remote Control, Power Adapter, Power Cord, Screws (x2), USB Cable, Quick Start Guide	

* Specifications may vary depending on location and are subject to change without notice.

Product Appearance

Front



1. Removable Camera Lens
2. Speaker
3. Microphone Array
4. LED Indicator
5. Mode Switch Button

Back



1. USB Type-A for Camera Connection
2. RJ45
3. USB 3.0 Type-B
4. HDMI
5. USB Type-A
6. microSD Card Slot
7. RS-232
8. DC 12V
9. Kensington Slot

Camera



1. Snapshot Button



©2022 AVer Information Inc. All rights reserved.
All brand names and logos are trademarks of their respective companies.

Distributor/Dealer