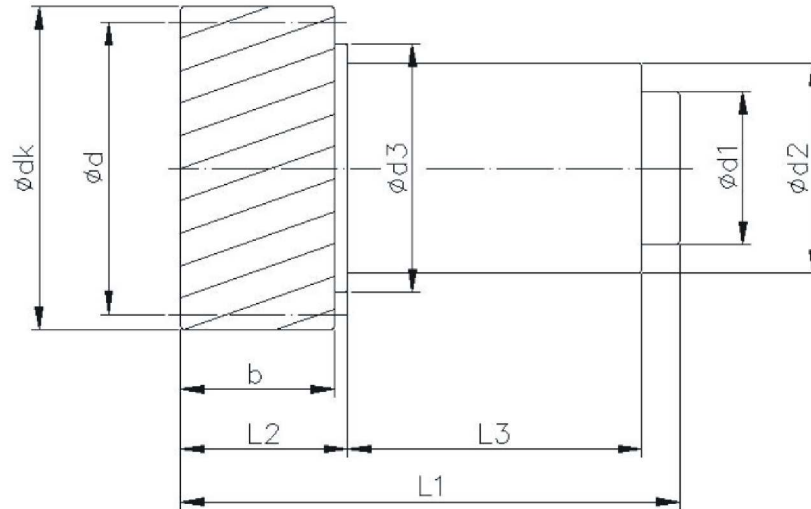


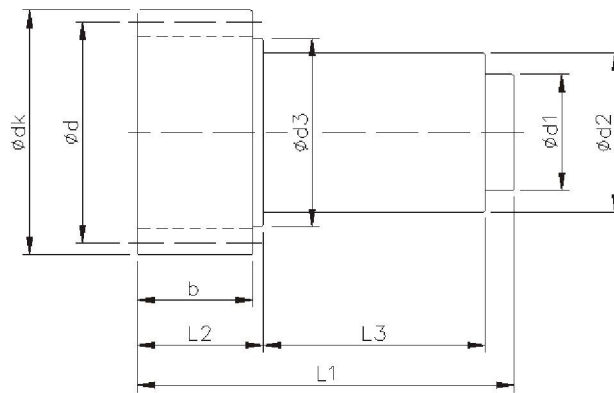
螺旋齒輪尺寸 (模數2/3/4/5/6/8/10/12)

Dimensions of helical tooth pinion (Module 2/3/4/5/6/8/10/12)



件號 Part No.	減速機規格 Reducer Type	模數 m	齒數 z	移位 係數 x	d	dk	d1 (g6)	d2 (h6)	d3	b	L1	L2	L3	C (mm)
PH132018	HG100	2	18	-	38.2	42.2	20	25	32	25	71.5	28.5	28	120
PH132021	HG100	2	21	-	44.56	48.56	20	25	36	25	71.5	28.5	28	140
PH132024	HG100	2	24	-	50.93	54.93	20	25	36	25	71.5	28.5	28	160
PH132024	HG120	2	24	-	50.93	54.93	22	30	36	25	88.5	28.5	40	160
PH132027	HG120	2	27	-	57.3	61.3	22	30	42	25	88.5	28.5	40	180
PH132030	HG120	2	30	-	63.66	67.66	22	30	42	25	88.5	28.5	40	200
PH133020	HG140	3	20	-	63.66	69.66	30	40	52	30	93.5	33.5	40	200
PH133022	HG140	3	22	-	70.03	76.03	30	40	60	30	93.5	33.5	40	220
PH133025	HG140	3	25	-	79.58	85.58	30	40	60	30	93.5	33.5	40	250
PH134015	HG160	4	15	0.355	63.66	74.5	36	45	52	40	115.5	43.5	47	200
PH134018	HG160	4	18	-	76.39	84.4	36	45	65	40	115.5	43.5	47	240
PH134021	HG160	4	21	-	89.13	97.13	36	45	65	40	115.5	43.5	47	280
PH134015	HG180	4	15	0.355	63.66	74.5	40	50	52	40	125.5	43.5	52	200
PH134018	HG180	4	18	-	76.39	84.4	40	50	65	40	125.5	43.5	52	240
PH134021	HG180	4	21	-	89.13	97.13	40	50	65	40	125.5	43.5	52	280
PH135015	HG210	5	15	0.3723	79.58	93.3	50	60	68	50	150.5	53.5	63	250
PH135018	HG210	5	18	-	95.49	105.49	50	60	75	50	150.5	53.5	63	300
PH135021	HG210	5	21	-	111.41	121.41	50	60	75	50	150.5	53.5	63	350
PH136015	HG240	6	15	0.3756	95.49	112.0	60	70	80	60	172.5	63.5	73	300
PH136018	HG240	6	18	-	114.59	126.59	60	70	98	60	172.5	63.5	73	360
PH136020	HG240	6	20	-	127.32	139.32	60	70	98	60	172.5	63.5	73	400
PH138015	UG/UM	8	15	0.355	127.32	149.0	80	90	105	80	230	84	100	400
PH138018	UG/UM	8	18	-	152.79	168.79	80	90	120	80	230	84	100	480
PH138021	UG/UM	8	21	-	178.25	194.25	80	90	120	80	230	84	100	560
PH13A015	UG/UM	10	15	0.4825	159.16	188.81	95	110	135	100	280	104	120	500
PH13A018	UG/UM	10	18	-	190.99	210.99	95	110	150	100	280	104	120	600
PH13A021	UG/UM	10	21	-	222.82	242.82	95	110	150	100	280	104	120	700
PH13A215	UG/UM	12	15	0.4589	190.99	226	130	150	165	130	370	136	160	600
PH13A218	UG/UM	12	18	-	229.18	253.18	130	150	180	130	370	136	160	720
PH13A220	UG/UM	12	20	-	254.65	278.65	130	150	180	130	370	136	160	800

Dimensions of Spur tooth pinion



(模數 2/3/4/5/6/8/10/12) Dimensions of spur tooth pinion (Module 2/3/4/5/6/8/10/12)

件號 Part No.	減速機規格 Reducer Type	模數 m	齒數 Z	移位 係數 x	d	dk	d1 (g6)	d2 (h6)	d3	b	L1	L2	L3	C (mm)
PS132018	HG100	2	18	-	36	40	20	25	30	25	71.5	28.5	28	113.1
PS132022	HG100	2	22	-	44	48	20	25	36	25	71.5	28.5	28	138.23
PS132025	HG100	2	25	-	50	54	20	25	36	25	71.5	28.5	28	157.08
PS132025	HG120	2	25	-	50	54	22	30	36	25	88.5	28.5	40	167.08
PS132028	HG120	2	28	-	56	60	22	30	45	25	88.5	28.5	40	175.93
PS132032	HG120	2	32	-	64	68	22	30	45	25	88.5	28.5	40	201.06
PS133019	HG140	3	19	-	57	63	30	40	48	30	93.5	33.5	40	179.07
PS133022	HG140	3	22	-	66	72	30	40	58	30	93.5	33.5	40	207.35
PS133026	HG140	3	26	-	78	84	30	40	58	30	93.5	33.5	40	245.04
PS134016	HG160	4	16	0.475	64	75.8	36	45	53	40	115.5	43.5	47	201.06
PS134018	HG160	4	18	-	72	80	36	45	60	40	115.5	43.5	47	226.19
PS134022	HG160	4	22	-	88	96	36	45	65	40	115.5	43.5	47	276.46
PS134016	HG180	4	16	0.475	64	75.8	40	50	53	40	125.5	43.5	52	201.06
PS134018	HG180	4	18	-	72	80	40	50	60	40	125.5	43.5	52	226.19
PS134022	HG180	4	22	-	88	96	40	50	65	40	125.5	43.5	52	276.46
PS135017	HG210	5	17	-	85	95	50	60	72	50	150.5	53.5	63	267.46
PS135020	HG210	5	20	-	100	110	50	60	80	50	150.5	53.5	63	314.16
PS135024	HG210	5	24	-	120	130	50	60	80	50	150.5	53.5	63	376.99
PS136016	HG240	6	16	0.4834	96	113.8	60	70	80	60	172.5	63.5	73	301.59
PS136018	HG240	6	18	-	108	120	60	70	92	60	172.5	63.5	73	339.29
PS136020	HG240	6	20	-	120	132	60	70	92	60	172.5	63.5	73	376.99
PS138016	UG/UM	8	16	0.4375	128	151	80	90	105	80	230	84	100	402.12
PS138018	UG/UM	8	18	-	144	160	80	90	115	80	230	84	100	452.39
PS138020	UG/UM	8	20	-	160	176	80	90	115	80	230	84	100	502.65
PS13A016	UG/UM	10	16	0.4	160	188	95	110	135	100	280	104	120	502.65
PS13A018	UG/UM	10	18	-	180	200	95	110	150	100	280	104	120	565.49
PS13A020	UG/UM	10	20	-	200	220	95	110	150	100	280	104	120	628.32
PS13A216	UG/UM	12	16	0.5	192	225.6	130	150	165	130	370	136	160	603.19
PS13A218	UG/UM	12	18	-	216	240	130	150	180	130	370	136	160	678.58
PS13A220	UG/UM	12	20	-	240	264	130	150	180	130	370	136	160	753.98

(CP 5/7.5/10/ 16/20/25) Dimensions of spur tooth pinion (CP 5/7.5/10/16/20/25)

件號 Part No.	減速機規格 Reducer Type	模數 m	周節 CP	齒數 Z	移位 係數 x	d	dk	d1 (g6)	d2 (h6)	d3	b	L1	L2	L3	C (mm)
PC131524	HG100	1.59155	5	24	-	38.20	41.40	20	25	32	20	66.5	23.5	28	120
PC131528	HG100	1.59155	5	28	-	44.56	47.75	20	25	36	20	66.5	23.5	28	140
PC131532	HG100	1.59155	5	32	-	50.93	54.11	20	25	36	20	66.5	23.5	28	160
PC132320	HG120	2.38732	7.5	20	-	47.75	52.52	22	30	40	25	88.5	28.5	40	150
PC132324	HG120	2.38732	7.5	24	-	57.29	62.07	22	30	48	25	88.5	28.5	40	180
PC132328	HG120	2.38732	7.5	28	-	66.84	71.62	22	30	48	25	88.5	28.5	40	210
PC133120	HG140	3.1831	10	20	-	63.66	70.00	30	40	52	30	93.5	33.5	40	200
PC133122	HG140	3.1831	10	22	-	70.00	76.39	30	40	60	30	93.5	33.5	40	220
PC133125	HG140	3.1831	10	25	-	79.58	85.90	30	40	60	30	93.5	33.5	40	250
PC135115	HG210	5.09296	16	15	0.3717	76.39	90.37	50	60	65	50	150.5	53.5	63	240
PC135120	HG210	5.09296	16	20	-	101.86	112.05	50	60	80	50	150.5	53.5	63	320
PC135125	HG210	5.09296	16	25	-	127.32	137.51	50	60	80	50	150.5	53.5	63	400
PC136315	HG240	6.3662	20	15	-	95.49	113.47	60	70	82	60	172.5	63.5	73	300
PC136318	HG240	6.3662	20	18	-	114.59	127.32	60	70	98	60	172.5	63.5	73	360
PC136320	HG240	6.3662	20	20	-	127.32	140.00	60	70	98	60	172.5	63.5	73	400
PC137916	UG/UM	7.95775	25	16	0.4145	127.32	149.84	80	90	110	80	230	84	100	400
PC137918	UG/UM	7.95775	25	18	-	143.24	159.16	80	90	120	80	230	84	100	450
PC137920	UG/UM	7.95775	25	20	-	159.16	175.07	80	90	120	80	230	84	100	500