

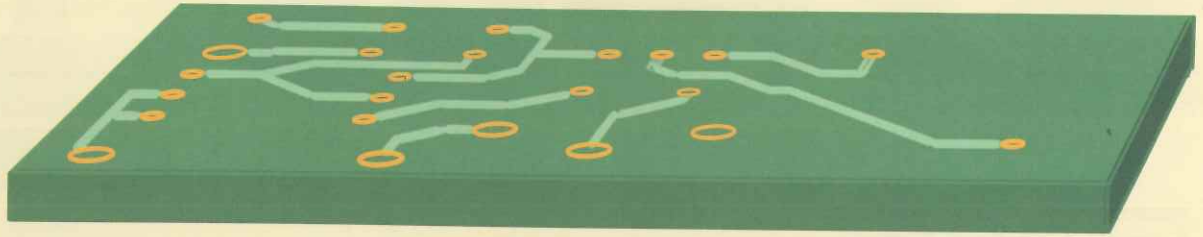
# ExPlus



**E**xcellence + **P**rofession  
= 「**ExPlus**」

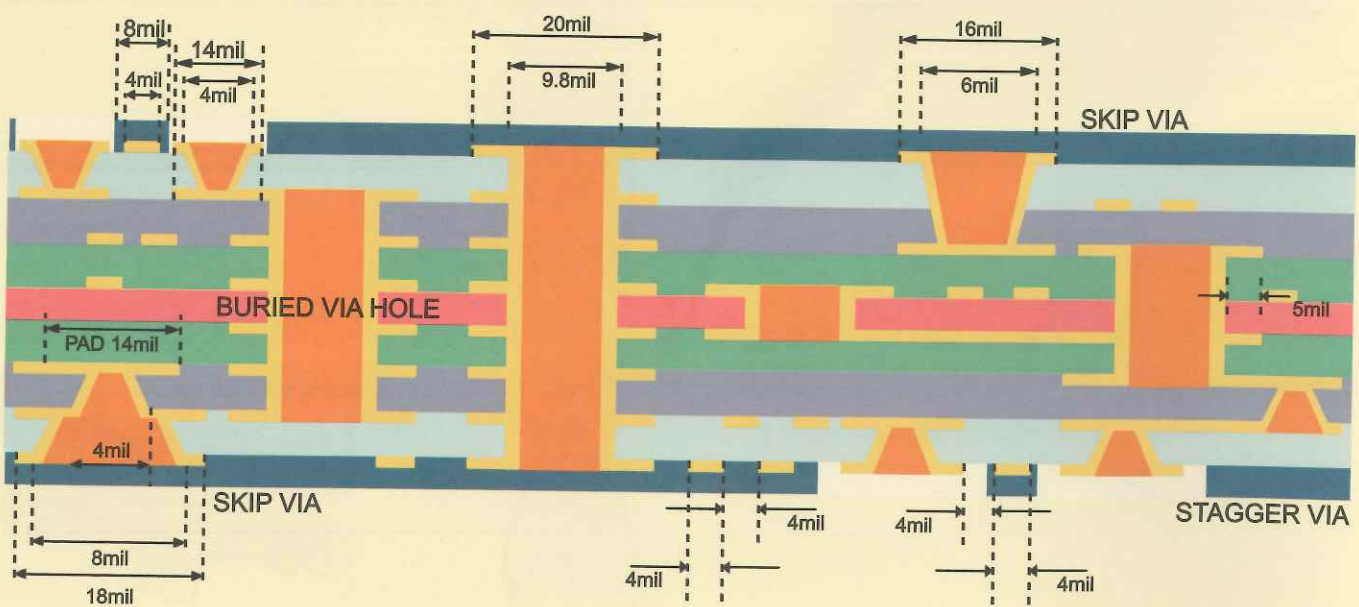


# Rigid PCB

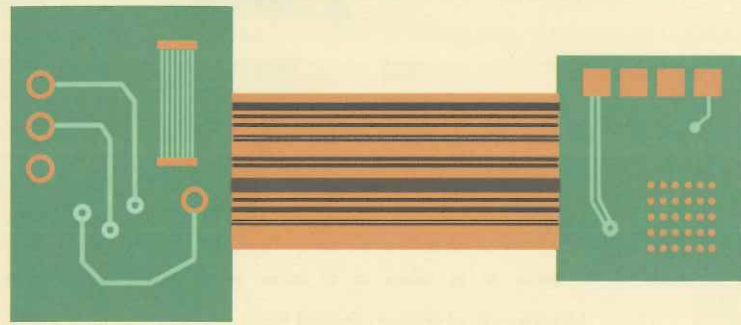


|                           |   |   |                                    |
|---------------------------|---|---|------------------------------------|
| Layers                    | Sample 1~32 / Mass Production 1~20  |   |                                    |
| Size                      | Max shipping size   | 600mmx550mm                                     | +/-0.15mm                          |
| Finished Board Thickness  | Min   | 0.4mm (4L) / 0.6mm (6L)                         | +/-0.1mm                           |
|                           | Max   | 3.6mm<br>(2.2~3.6mm depends on material)        | +/-10%                             |
| Copper Thickness          | 1/3~5 oz ( Depends on material )  |   |                                    |
| Impedance Control         | +/-10%  |   |                                    |
| Via Holes                 | Min   | Mechanical Drill : 0.2 mm<br>Micro Via : 0.1 mm | PTH +/-0.075mm<br>NPTH +/-0.05mm   |
|                           | Buried / Blind  | Yes   |                                    |
| Aspect Ratio              | Sample : 10 : 1 / Mass production : 8 : 1                                   |   |                                    |
| Min Trace Width / Spacing | Internal  | 0.075mm   | The tolerance followed by IPC-6012 |
|                           | External  | 0.075mm   |                                    |
| Advance Process           | Blind Routing Cavity , Coil Board , Plug Hole With Epoxy , Half Hole Plated |   |                                    |
| Spacing between Pads      | Min   | 8 mil   |                                    |

# HDI



# Flexible PCB / Rigid-Flex PCB

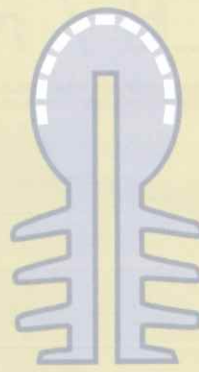


|                                      | FPC  |              |                      |            | Rigid-Flex  |
|--------------------------------------|--|--------------|----------------------|------------|---|
| Layers                               | 1~4L   |              |                      |            | 2~14L   |
| Finished Board Thickness with Copper | Min  | 0.075mm (1L) | Max                  | 0.3mm (2L) | The specification of Rigid PCB please refers to the table on the left |
| Finished Board Thickness Tolerance   | ± 0.02~0.04mm                                  |              |                      |            |   |
| Impedance Control                    | +/-10%   |              |                      |            |   |
| Base Copper Thickness                | Standard : 1/3 oz, 1/2 oz, 1oz / Special : 2oz |              |                      |            |   |
| Base Film Thickness                  | Standard : 0.5mil, 1mil / Special : 2mil       |              |                      |            |   |
| Stiffener                            | PI / FR-4 / SUS                                |              |                      |            |   |
| Finished Hole Diameter               | Min  | φ0.15mm      | Max                  | φ6.30mm    |   |
| Finished Hole Diameter Tolerance     | PTH  |              | ± 3 mil ( ± 0.075mm) |            |   |
|                                      | NPTH   |              | ± 2 mil ( ± 0.05mm)  |            |   |
| Min Trace Width / Spacing            | Single sided : 1.5/1.5 mil (0.038/0.038 mm)    |              |                      |            |   |
|                                      | Double sided : 2/2 mil (0.05/0.05 mm)          |              |                      |            |   |

## Stack-up Rigid-Flex PCB

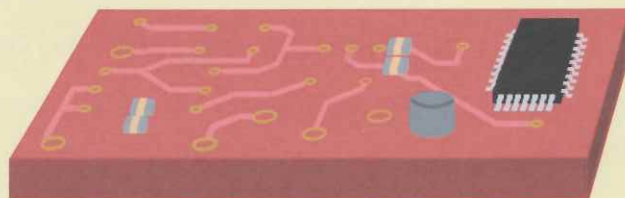
| Type      | Standard            | Air-Gap         | HDI<br>(Stack-via 2+N+2) |
|-----------|---------------------|-----------------|--------------------------|
| Structure |                     |                 |                          |
| Type      | Flex on Outer Layer | Multilayer Flex | Different Thickness      |
| Structure |                     |                 |                          |

# Aluminum PCB



|                          |   |               |                                       |
|--------------------------|---|---------------|---------------------------------------|
| Single Side              | Maximum shipping Panel Size                         | 470mm*570mm   |                                       |
| Finished Board Thickness | Minimum Board Thickness                             | 0.6mm+/-0.1mm |                                       |
|                          | Maximum Board Thickness                             | 2.0mm+/-10%   |                                       |
| Dielectric Thickness     | 80um~152um  |               |                                       |
| Dielectric Material      | Heat Conductive Glue / FR4                          |               |                                       |
| Aluminum Type            | 5052  |               |                                       |
| Copper Thickness         | 1/2~2 OZ  |               |                                       |
| Trace Width / Spacing    | Minimum Line Width/ Spacing<br>(Internal& External) | 0.1mm         | The tolerance followed<br>by IPC-6012 |
|                          | Immersion Gold (Ni/Au)                              | 0.025~0.1 um  |                                       |
| Surface Finish           | Lead Free HASL                                      | Min. 2.5 um   |                                       |
|                          | DSP (Entek CU106A)                                  | 0.2~0.5 um    |                                       |
| Solder Mask              | LPI   |               |                                       |
| Test                     | Hi-Pot Test   |               |                                       |

## PCBA



**ExPlus** was established in the year 1997 in Taiwan.

As our customer requirement are constantly changing and increasing

**ExPlus** is committed to continuous improvement in manufacturing process, Machinery and technologies available.

**ExPlus** is your first stop solution in fabrication of Rigid PCB, HDI PCB, Metal Core PCB, Flexible PCB, Rigid-Flex PCB, PCB Assembly, and Component Procurement.

## Contact Us

Tel : +886-3-3116170

Fax : +886-3-3115876

E-mail : [company@explus.com.tw](mailto:company@explus.com.tw)

# ExPlus



File:No:E210681

