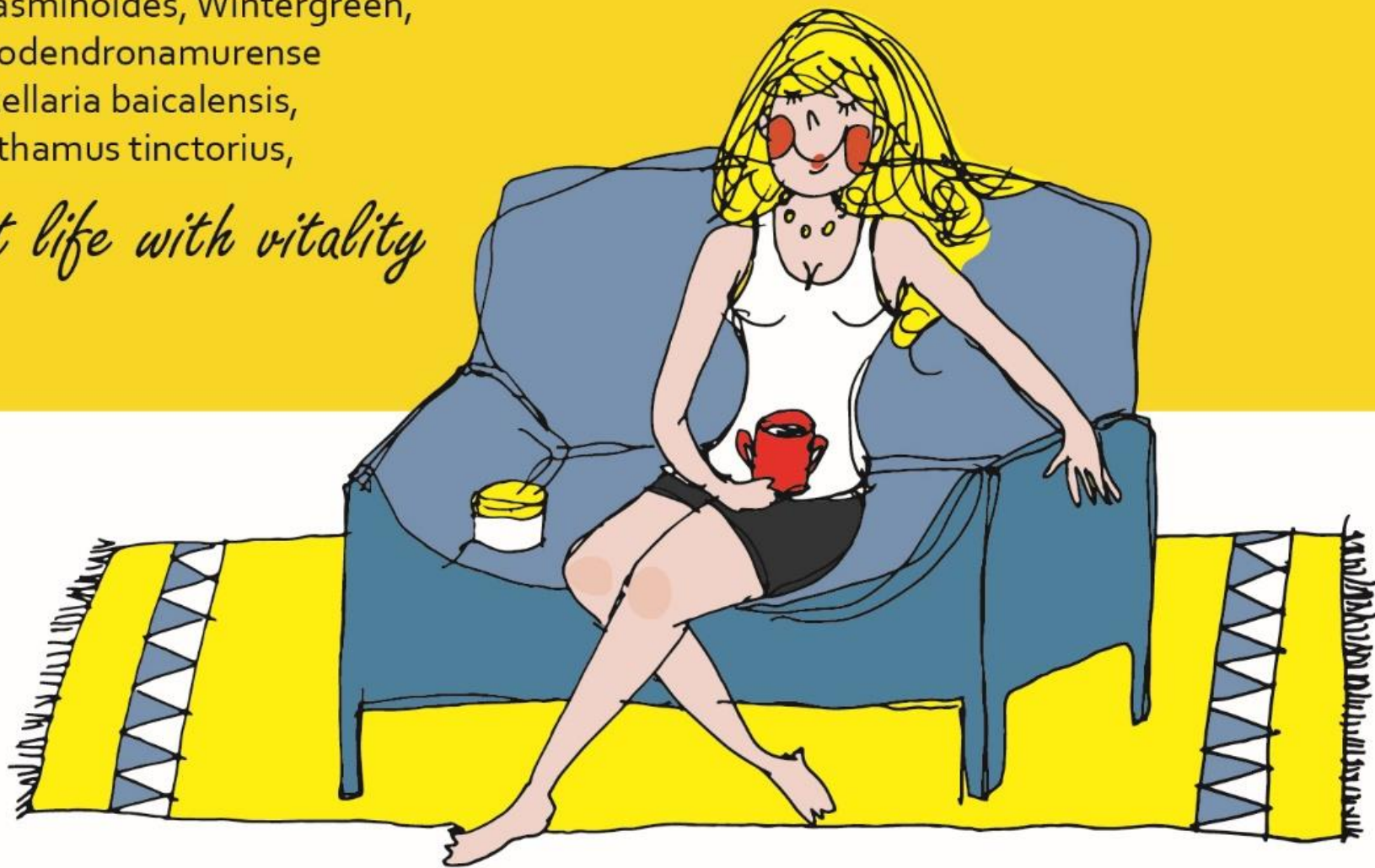


Relax Balm

Gardenia jasminoides, Wintergreen,
Phellodendronamurensense
Scutellaria baicalensis,
Carthamus tinctorius,

Brilliant life with vitality





Relax Balm

People often suffer from various aches and pains due to high work pressure or prolonged sitting for a long time. Sore shoulders and necks are more commonly seen among those addictive to handheld electronic devices. Relax Balm was originally designed to relieve various pains, meanwhile it can help stimulate the blood flow, smooth the muscles and bones. It has built a great reputation among elderly and younger population upon using it. It is a product that meets the needs of the general public and becomes an essential household item.





Relax Balm

It has immediate effect on joint pain and calf pain caused by after childbirth.

After giving birth, due to hormonal changes in the body, the whole body joints are in the open state, easily exposed to wind chill. Relax Balm uses the energy of plants to soothe, drive away the wind chill feeling. The methodology is based on herbal plants compound designed for inflammatory and non-inflammatory pain:

- Inflammation: such as muscle soreness
- Non inflammation : can penetrate into tendons, bones, nerves, joints such as sciatic nerve, muscle pain, joint pain, also includes: bloating stomach, stiff neck, chest tightness after drinking, sore knees, headaches. It eliminates negative energy, insomnia, and relieve mental tension, etc.





Relax Balm

Works in three minutes.

Rub where uncomfortable

Solve the problem of meridian obstruction. Have immediate and significant effects for chest tightness after drinking, stiff neck, bloating stomach, knee pain, bruises, swelling, headache, backache, acute enteritis. It is more direct and effective in eliminating negative energy from the body. People who are lack of energy, stressed, unable to work or sleep, lightly wipe on the back, can refresh yourself, relieve stress, improve work efficiency, or fall asleep easily.





Competitive Product Analysis of Relax Balm

<i>Description</i>		<i>Leaping Muscle, Heat Up, Salonpas, Massage Delight, Fatigue Wipe Out</i>	<i>Mentholatum, Green Oil, Flower Oil, Tiger Balm, German Chilli Brand Plaster</i>	<i>One Root Patch</i>	<i>Relax Balm</i>
Ingredient attributes	Chemical	V	V		
	Plant			V	V
Direction of use	Patch	V	V	V	
	Ointment		V	V	
	Cream	V		V	V
	Liquid	V	V		
Features	Quick relief			V	V
Side effect		Nausea, acidosis, Cause breathing difficulties, Electrolyte imbalance causes arrhythmia, Stomach bleeding, Acute renal failure.	Excessive peppermint suppresses breathing, Camphor may trigger allergies, Contraindicated for patients with fava bean disease.	none	none
Side effect		Watch out for the number of application.	Watch out for the number of application.	Prescription design : Relieve inflammatory pain.	The prescription for dredging meridian is designed with plant compound for inflammatory and non-inflammatory pain : 1. Inflammation: such as muscle soreness 2. Non-inflammatory: Such as sciatic nerve, muscle pain, but also: stomach bloating, stiff neck, chest tightness after drinking, knee pain, frozen shoulders, headache, etc., It is more direct and effective to eliminate body negative energy. It's even more precious to kungfu practitioners and meditators. Those lack of energy during the day and unable to concentrate, or those who are nervous, stressed, and unable to sleep at night, can lightly apply the cream on the back and once absorbed, it refresh you, or relieve stress and sleep easily.



Passed SGS Test.

(Not including 312 common test items of western medicine ingredients)

For your buying with rest assured and using at ease.



Test Report

超微量工業安全實驗室
Ultra Trace Industrial Safety Hygiene

REPORT NO:

UB/2016/50033A-01

Date: 2016/05/17

Page : 1 of 7

KING-DAI BIOTECH CO.

5F-1,NO.123, SEC.3,HO-PING EAST ROAD,TAIPEI,TAIWAN,R.O.C.

The following sample(s) was/were submitted and identified by/on behalf of client as:

Sample Name : Pure-by-Nature RELAX BALM
 Application : KING-DAI BIOTECH CO.
 Style/Item No: -
 Sample Condition: -
 MFG: Please refer to the photos for sample shown at the last page of this report.
 EXP: -
 Date of Sample Received: 2016/05/03
 Date of Testing: 2016/05/03 to 2016/05/17
 Test Requested: Qualitative analysis of 312 Chemicals for clinical use.
 Test Method: With reference to Method of Test for Adulterants in Chinese Medicine and Foods.
 Test Results: Analysis was performed by TLC, LC/MS/MS, or GC/MS.
 The sample is non-detected in 312 Chemicals for clinical use(see appendix).

NOTE :

- 1.The test report merely reflects the test results of the consigned matters of the client and is not a certification of the legitimacy of the related products.
- 2.The report will be in vain if it is used separately.
- 3.The test result over detection limit is summarized in the table. All test items and method detection limits(MDL) are listed in appendix.

Signed for and on behalf of
SGS Taiwan Ltd.

Yi-wei Min Wen
Manager



This document is issued by the Company subject to its General Conditions of Service printed overleaf, available on request or accessible at <http://www.sgs.com.tw/Terms-and-Conditions.aspx> and for electronic format documents, subject to Terms and Conditions for Electronic Documents at <http://www.sgs.com.tw/Terms-and-Conditions-Terms-and-Conditions.aspx> and, in addition, to the limitation of liability, indemnification and jurisdiction issues defined therein. Any holder of this document is advised that information contained herein reflects the Company's findings at the time of its intervention only and within the limits of Client's instructions, if any. The Company's sole responsibility is to its Client and this document does not constitute an endorsement, warranty or certification of the quality or performance of the product or service. This document cannot be reproduced except in full, without prior written approval of the Company. Any unauthorized alteration, forgery or falsification of the content or appearance of this document is unlawful and offenders may be prosecuted to the fullest extent of the law. Unless otherwise stated the results shown in this test report refer only to the sample(s) tested.

No.38, Wu Chuan 1st Rd., New Taipei Industrial Park, Wu Ku District, New Taipei City, 24850, Taiwan 新北工業區中區中興路38號
 Tel: (886-2) 2206-2000 Fax: (886-2) 2206-1338
 www.sgs.com.tw
 Member of the SGS Group